

Sandwich Park District

Recreational Programs, Activities and Special Events in Your Community!



**Register
online!**

Registration opens!
December 15th!

"We have something for you"

New this Winter/ Spring

Pg. 11 Mini Golf Outing

Pg. 13 Adult Co-ed Softball

Pg. 13 Adult Co-ed Kickball

Pg. 19 Mutt Strut



2026 WINTER/SPRING PROGRAM GUIDE

Mission Statement:

It is the purpose of the Sandwich Park District to efficiently and economically provide recreation programs, facilities, and open space, which are designed to provide wholesome, constructive and enjoyable leisure time experiences that benefit the individual resident and the community of Sandwich as a whole.



Daddy Daughter Dance

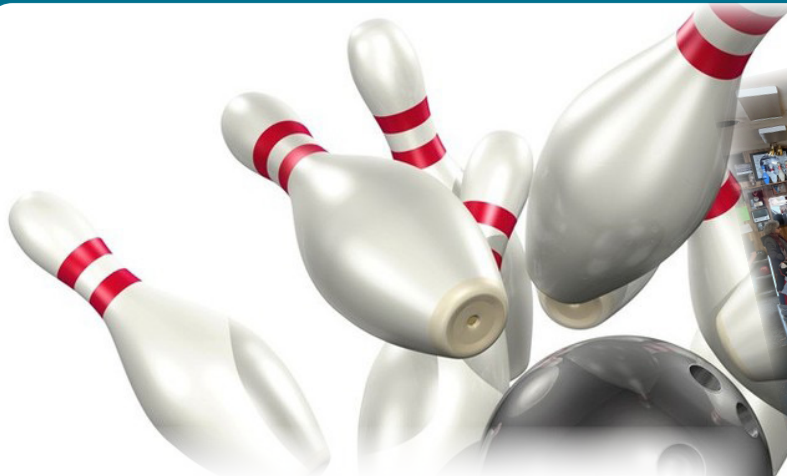
Fathers and daughters, grandfathers and granddaughters, uncles and nieces are all invited to join us for an evening of dinner, dancing, and fun! This is a great opportunity for busy dads to spend quality time with their daughter(s). Treat your special little girl to an elegant evening. Special dresses for girls, suits and ties for dads, are recommended, but not required. All young ladies will receive a complimentary gift bag. The dinner is catered with kid friendly choices, lemonade and water included.

PLEASE NOTE: Soft drinks, raffles, and pictures are available for an additional fee. Professional pictures will be available; payment must be made before pictures are taken.

FEE: The fee is per person. Please register all that plan to attend.

Instructor: Recreation Staff
Location: Sandwich Middle School

DATE	TIME	DAY	R/NR	AGE	REG. BY
2/7	6pm-9pm	Sa	\$30/36	3-13	1/19



MOTHER & SON BOWLING

Mothers grab your special little guys and bring them out to a night of bowling and fun at Idle Hour Lanes. Two games of bowling, shoes, ball, pizza, soda, prizes, music and fun all included! Several raffle prizes available along with every young man receiving a complimentary gift bag to go home with. Enjoy some quality time with your sons and knock down some pins while you're at it.

FEE: The fee is per person. Please register all that plan to attend.

Instructor: Recreation Staff
Location: Idle Hour Lanes

DATE	TIME	DAY	R/NR	AGE	REG. BY
3/7	3pm-6pm	Sa	\$20/23	3-13	2/20

Get Involved Winter / Spring Volunteer Opportunities



Spring Egg Hunt
Daddy Daughter Dance
Mother Son Bowling

Email interest to: sandwichparkdistrict@comcast.net
or register to volunteer online at sandwichparkdistrict.org
under the volunteer catalog tab.

Special Events.....	2
Volunteer Opportunities.....	3
Registration Information, Director's Letter.....	4
Registration Form, Waiver.....	5
Office Hours, General Information.....	6
Board Commissioners, Staff, Rental Information.....	7
Park Map Information.....	8
Community Engagement.....	9
Community Gardens.....	10
Varied Interest.....	11
Preschool, Pre-K Friday.....	12
Varied interest.....	13
Athletic Classes.....	14
Youth Sports Leagues.....	15-16
Youth Sports.....	17
Fitness/Dance.....	18
Dog Park.....	19
Free Educational Courses.....	20
Foundation.....	21
It's Cold Outside/Co-op/KSRA.....	22
Sponsorship / Sponsorship Opportunities.....	23
Guide Advertising.....	24
Lunch Bunch.....	25
Trips.....	26
More Special Events	27



***Sandy the
Sasquatch***

Sandy the Sasquatch is our park mascot. You will see Sandy around Park District events, highlighting programs within the brochure and even on some promotional materials such as shirts, activity books and more. Sandy loves nature and will help us provide fun and exciting programs for our kids. When you see Sandy, please say hello with a high-five or hug.

**Register
Online**

letter FROM THE DIRECTOR...

PARK AND RECREATION UPDATE...

Hello Friends,

As winter settles in and spring is in the near future, I want to take a moment to thank you for being such an integral part of the Sandwich Park District and this amazing community. This time of year, is truly special in our parks; a time where the snow and frost cover the parks and fields and offers feelings of peace to the area. If you have not taken the opportunity, I encourage you to go out and enjoy a peaceful winter walk through the park.

Our team has been busy preparing a full program guide of winter and spring activities designed to bring joy and fitness to all ages. From ice skating at Knights Park and winter walks through Harvey Creek to the return of our ever-popular Spring Egg Hunt, there's something for everyone to enjoy. We're also working behind the scenes to ensure our parks remain safe, clean, and beautiful throughout the seasonal transition.

As the snow melts and our parks begin to green, we look forward to seeing families out in the parks and children beginning spring sports programs again. This spring we will be running our Spring Soccer as well as Spring Softball. If you're not sure if your child is ready for a full sports league, please check out the different skills sessions we offer for many different sports. Also, coming up this winter, we will host our Daddy Daughter Dance and Mother Son Bowling event. These two events are very popular with our families and we cannot wait to see you there enjoying quality family time! There is so much to do here at the Sandwich Park District and lots of fun activities and events for everyone to enjoy.

On behalf of the entire Sandwich Park District team, thank you for helping us make every season special. We can't wait to see you out in the parks whether you're lacing up skates, joining a spring sport, or simply enjoying a quiet morning walk. See you at the park!

"The intellect must not be kept at consistent tension, but diverted by pastimes.... The mind must have relaxation, and will rise stronger and keener after recreation." -Seneca the Younger

Sincerely,



William Novicki, CPRP

Executive Director

Sandwich Park District



Administrative Offices

David A. Francis Center
1001 N. Latham Street
Sandwich, IL 60548
815-786-8044

Office Hours

Monday-Friday 9:00A-5:00P

**WHICH FEE DO I PAY...
In-District or Out-of-District?**

A Sandwich postal address does not in itself determine your Park District residency. Park District residency is determined as living within the Sandwich Park District "taxing" boundaries.

Sandwich Park District residents support the district through their property taxes. The district was established in 1966 to include only the City limits of Sandwich. Anyone living out-of-district (Lake Holiday, Wildwood, rural areas, Hidden Oaks, etc.) is termed a Park District non-resident, or out-of-district.

Subsequently, non-residents do not pay taxes that contribute to supporting the district facilities and programs. Residency is based on the home or living address of the program participant, and not the participant's business address or address of in-district family members.

If in doubt, if you pay property taxes to the Sandwich Park District on the dwelling in which you reside, you are a park district resident and entitled to the in-district fee.

LOST AND FOUND

Items found in our parks are brought to the David A Francis Center, 1001 N. Latham Street by our Parks staff. If you leave something in a park please stop by the Center to see if we have your item or call 815-786-8044.

**CATALOG CHANGES/
ERRORS DISCLAIMER**

Occasionally, there may be an error that appears in print or online regarding days, times, fees, or other information. When such errors occur, Sandwich Park District will do everything possible to correct the situation promptly. Thank you for your patience and understanding when these situations arise.

**FEE ADJUSTMENTS
DISCLAIMER:**

If a fee adjustment is made to any print material, the fee online will supersede all printed material.

FEDERAL COMPLIANCES

The Sandwich Park District does not discriminate on the basis of race, color, religion, gender, sexual orientation, age, national origin, veteran's status, marital status, disability, or any other characteristic protected by law, in its programs and activities.

PARK BOARD MEETINGS

Park Board meetings are now held on the second (2nd) Wednesday of every month at 6:30P in the David A. Francis Center. The public is welcome to attend these open meetings and are encouraged to participate.

TREE MEMORIAL

The Sandwich Park Foundation welcomes donations of trees as a special way to honor or remember a friend or loved one. Trees will be enjoyed by many generations to come while improving our environment and providing shade and beauty for our parks. The park district will plant and maintain a tree on park property and your loved one will be remembered on our beautiful memorial growing tree located in the lobby at the David A. Francis Center.

PROGRAM CAPACITY

All programs have minimum and maximum enrollments. If the minimum enrollment is not met one week prior to the program date, the park district may have to cancel, postpone, or consolidate the program with another. If we cancel a program, a full refund is issued.

THANK YOU VOLUNTEERS

For all your help and dedication when we need coaches, assistant coaches, help with special events and with all of the volunteer opportunities the park district has to offer. We couldn't do it without all of you! Want to be a volunteer? Just let us know!

**FAMILY DISCOUNT
PROGRAM**

The third child (or more) in your household receives a 50% off lowest resident price for "selected" sports leagues. Children must be registered for the same activity.

**PHOTOGRAPHY/SOCIAL
MEDIA POLICY**

Please be aware that by registering for a program or class, participating in an activity, attending an event, or using District facilities or property, you authorize the District to use photos and video footage for promotional purposes in District publications, advertising, marketing materials, brochures, event flyers, social media (including Facebook, YouTube, Instagram, Twitter, and other social media sites operated by the District), and the District's website without additional prior notice or permission and without any compensation to you. All photos and videos are property of the District.

REFUND POLICY

1. Full refund or credit will be issued if the Recreation Department cancels a program.
2. Cancellation from any session/program must be requested on or before the registration by deadline.
3. No refunds will be given for unforeseen change in instructor or building locations.
4. No refunds will be given for absenteeism.
5. Refund checks are mailed out within 30-45 days for payments made by cash or check, in conjunction with the bill list schedule. For payments made with credit/debit card will be issued back to the card used. For credit/debit card refunds please allow 3-5 days for funds to credit back to the account.



**Register
Online**

SANDWICH PARK DISTRICT GOVERNING BODY

The Sandwich Park District is a separate governing unit which levies its own tax to provide park facilities and recreation for the residents of the district. Innovative leadership starts with our community elected, seven member Board of Commissioners. Members of the Board are elected to 6 year terms and serve without compensation. Meeting 2nd Wednesday of the month at 6:30pm.

Dan Hoyt.....President
John Fincham.....Vice President
Theresa Jourdan...Secretary/Treasurer
Brad Knepper.....Commissioner
Shaun Legge.....Commissioner
Eric Terlep.....Commissioner
Melissa Walsh.....Commissioner

ADMINISTRATION

Bill Novicki, CPRP
Executive Director

Tes Isham
Finance Manager

Shawn Rickert
Office Manager

RECREATION STAFF

Jordan Beckwith
Recreation Manager

Alex Hoppe
Recreation Assistant

MOTHER GOOSE CLUB PRESCHOOL

Barb Olin, B.A.
Director, Teacher

Rachel Newnam
Assistant

Ashley Risk
Assistant

PARKS STAFF

Gary Bark
Park Foreman

Dalton Sherman
Maintenance

WANT TO RENT THE FRANCIS CENTER?



LOOKING FOR MEETING SPACE OR A PLACE TO GATHER FAMILY AND FRIENDS?

The David A. Francis Center at 1001 N. Latham Street is available for public rental when not in use for Park District programs and activities. The Center is handicap accessible and accommodates up to 100 guests. A modern kitchen is also available for use at no additional charge. No alcohol or smoking permitted on grounds. A Driver's License will be copied for proof of residency. Effective 2013, shelters will no longer be first-come, first-served. In order to assure you can have your event at one of the shelters, rent will now be charged to guarantee availability.

RENTAL FEES:

- Park District Resident
\$120 first 3 hours, \$25 per hour thereafter
Plus \$100 refundable deposit
Shelters: \$25 first 3 hours, \$10 per hr. thereafter
Shelters Electric Charge: \$10 minimum.
- Park District Non Resident
\$170 first 3 hours, \$25 per hour thereafter
Plus \$100 refundable deposit
Shelters: \$35 first 3 hours, \$10 per hr. thereafter
Shelters Electric Charge: \$10 minimum.
- Not for Profit Groups and or Events
\$85 first 3 hours, \$25 per hour thereafter
Plus \$100 refundable security deposit
Shelters: \$25 first 3 hours, \$10 per hr. thereafter
Shelters Electric Charge: \$10 minimum.
- For Profit Groups and or Events
\$170 first 3 hours, \$35 per hour thereafter
Plus \$100 refundable deposit
Shelters: \$35 first 3 hours, \$10 per hr. thereafter
Shelters Electric Charge: \$10 minimum.

Note: Daytime hours are available on rental basis for your group's meetings.
Call 815-786-8044 to check availability.

PARKS INFORMATION

PARK SITES

1. Ernest Memorial Park
3104 Ernest Drive (Dutch Acres II)
2. Harvey Creek Conservation Area
Dayton Street and Lions Road
3. Henderson Park
Green St./Second St.
4. James Knights Park
David A. Francis Center-
Administrative Offices
1001 N. Latham Street
5. Memorial Park
601 S. Green St.
6. Milestone Park
1375 N. Castle Street
7. Patriots Park
1220 N. Daniel Lane
8. Veterans Park (Gazebo)
143 E Railroad Street
9. Westfield Park
610 W. Charlotte St.
Sandwich, IL 60548
10. Splash Park
1250 N. Fairwind
11. Troeger Dog Park
(within Milestone Park)
12. Skate Park
1375 N Castle St

Park tours are available to the public upon request. To tour and learn the history of each park, contact the office at 815-786-8044 to schedule a tour.

PARK HOURS

Parks are open from dawn till dark unless otherwise posted.

PLEASE CALL 911

If you see something that should not be occurring in your neighborhood park, please call the Sandwich Police Department at 815-786-7261 or 911. They will assist the park district in monitoring your parks, maintaining the beauty and safety for you to visit and enjoy.

VISIT OUR WEBSITE

At www.sandwichparkdistrict.org, you can find information about all of our parks, activities, and much more.

MESSY SHOES CAN RUIN YOUR DAY

All dogs must be on leash while using all of our parks. As a responsible pet owner you MUST CLEAN UP AFTER THEM. Bags are available at the entrance to Harvey Creek Conservation Area and Milestone Park.

SCHOOL ACKNOWLEDGEMENT

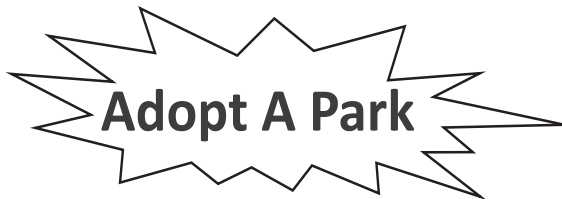
Some of our programs use Sandwich Community School District #430 facilities. The Sandwich Park District acknowledges and appreciates the cooperation of District #430 board and staff in making this possible.

SANDWICH PARK DISTRICT | PARKS AND FACILITIES INDEX



	Ernest Memorial Park	Harvey Creek Conservation Area	Henderson Park	James Knights Park	Memorial Park	Milestone Park	Patriots Park	Veterans Park	Westfield Park	Dog Park
ACREAGE	0.50	30	2	4.50	16	20	2.50	0.50	0.25	
Ball Fields					★	★				
Basketball			★	★			★			
Benches	★	★	★	★	★	★	★	★	★	★
Drinking Fountain			★	★	★	★	★	★		★
David A. Francis Center, Administrative Offices				★						
Exercise Stations						★				
Parking	★	★	★	★	★	★	★	★	★	★
Picnic Areas		★	★	★	★	★	★	★		
Playground	★		★	★	★	★	★		★	
Recreation Trails						★				
Sand Volleyball				★						
Shelters		★	★	★	★	★	★	★	★	
Soccer Fields				★		★				
Tennis Courts						★				
Skate Park						★				
Walking Path		★								
Splash Park						★				
Ice Skating Rink				★						
Port-a-Potties*		★		★	★	★				
Electric**				★				★		

*Apr-Oct Only
**Permit Required



Adopt A Park

Are you or is your group interested in adopting a park?
Please contact the Sandwich Park District for more details.
(815)786-8044 SandwichParkDistrict.org



LIGHTNING WARNING SYSTEM

Sandwich Park District has a lightning detection system at Knights Park, Memorial Park, and Milestone Park. This system warns patrons, coaches and staff of actual lightning strikes within a 10-mile radius of the park. When lightning is detected, you will hear a 15-second blast and strobe lights will begin to flash. When this occurs ALL outdoor activities should cease and all persons should seek shelter in a permanent building or vehicle immediately. Activities may only be resumed once the system has indicated the "all clear" with three – 5 second horn blasts and the strobe lights will stop flashing.

Rev. 05/03/2024

SANDWICH COMMUNITY CHOIR

CALLING ALL SINGERS! Are you interested in creating community while performing beautiful music? Are you ready for a director who is equal parts professional and passionate about choral music? If so, the newly forming Sandwich Community Choir is for you! We are a non-auditioned group of adult choral singers whose mission is to create beautiful music while building community. No previous Choral experience necessary to join!

Instructor Bio: Tina Andersen is a professional musician and music educator with over 26 years experience. A graduate of the Eastman School of Music (Rochester, NY), Tina has spent most of her life making music and helping others reach their musical potential. Tina has studied choral conducting under Dale Warland and William Weinert and was accepted into Eph Ehly's prestigious conducting program. After moving back to the Sandwich area, Tina has spent the last several years as a general music educator with the Kaneland school district and as director of music ministries for St. Paul's UCC in Downers Grove. She is a passionate music educator and excited to offer these opportunities to the Sandwich community.

Instructor: Tina Andersen

Location: Sandwich Opera House

DATE	TIME	DAY	R/NR	AGE	REG. BY
2/3-4/4	6:30pm-8:30pm	Tu	\$96/106	13+	1/26

SANDWICH KIDS CHOIR

Any kids interested in joining a choir, listen up! The newly formed Sandwich Kids Choirs is a non audition choral group led by our fantastic Director Tina, who is just as professional as she is fun. She will be teaching all who participate proper vocal techniques and basic choral score reading all while making happy memories to last a lifetime. No previous Choral experience required to join!

Instructor: Tina Andersen

Location: Sandwich Opera House

DATE	TIME	DAY	R/NR	AGE	REG. BY
2/3-4/4	5:30pm-6:30pm	Tu	\$96/106	8-12	1/26

FIREARM SAFETY

Join us for a presentation on firearm safety, followed by an open Q&A session with a certified firearms instructor. Poor firearm technique can lead to serious injury, be sure to take this course to learn the best ways to keep yourself and those around you safe from harm.

Instructor: Steve & Annie Foote

Location: David A. Francis Center

DATE	TIME	DAY	R/NR	AGE	REG. BY
3/14	2pm-3:30pm	Sa	\$35/40	18+	3/6

INDOOR GARAGE SALE SELLERS

If you have items that you would like to sell, but are limited on space, this is the answer. Reserve an 8ft. table for only \$18 to sell your treasures. Sellers must stay the entire time of the sale, and are responsible for their own table, set up, cash box, tear down, and CLEAN UP including taking home empty boxes. Sellers will be permitted to set up at 7:30am and must be ready by 9:00am; late vendors will forfeit their space and fee. All "treasures" must be on the designated table space, and walkways must remain clear. Clothing racks are not permitted, space is too limited. Electric for a table is available for an additional charge of \$10. Registration is accepted on a first come, first served basis, and there are NO REFUNDS. Concessions are available for purchase. Advertising is included in your fee.

Note: The sale is held at St. Paul's Parish Center, 340 W. Arnold St. Sandwich; please help keep their facility clean by removing all trash and taking empty boxes with you when you leave.

Fee: \$18.00 per table. \$10.00 per booth for electric (additional charge).

Instructor: Recreation Staff

Location: 340 W. Arnold St. Sandwich

DATE	TIME	DAY	R/NR	AGE	REG. BY
3/14	9am-2pm	Sa	\$18/18	18+	2/13

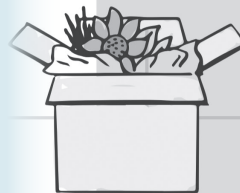
Indoor Garage Sale

Looking for unique finds or hidden treasure? Join us for our Indoor Garage Sale and discover vintage gems, one-of-a-kind items, and amazing deals you won't want to miss! This sale is made up of individuals sellers

March 14th, 2026
9:00 am - 2:00pm

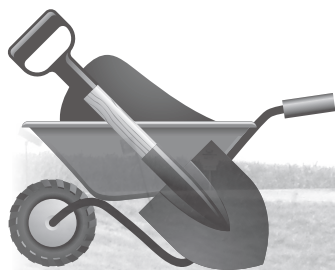
St. Paul's Parish Center
340 W. Arnold St.
Sandwich

Entrance Fee: FREE



Family 

COMMUNITY GARDEN INFO



Garden Plots are available at our Sandwich Park District Community Garden. The plots are approximately 10 x 50 (1 row) and are limited to two (2) per household. Garden plots are available for residents, non-residents, and nonprofits to rent. We ask you to plant more and donate whatever you can to the local food pantries. The Local Food Pantries are: Cornerstone Food Pantry, Harvest Chapel Food Pantry and St. John's Lutheran (Somonauk) Food Pantry. We ask that you coordinate your donation directly with the food pantry of your choosing.

Planting Date: Plots are open on May 1st, weather permitting. The park district tills the area before and after the season and supplies water tanks. You will need to supply necessary gardening tools.

Clean Up: By mid-October you will be required to clean your area, a compost bin is available.

Cost: \$25.00 per plot for residents, non-residents, and non-profit organizations. An additional \$25.00 refundable security deposit will be collected. Part of your obligation is to weed and clean your area during the season and at the end. If you do not fulfill your obligation to clean your plot you may jeopardize your opportunity to rent next year and will forfeit the \$25 deposit.

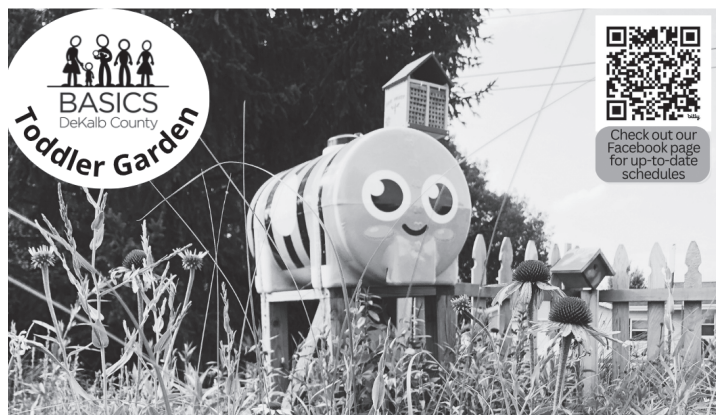
Location: The garden is located on Gletty Road, just south of Rt. 34 on the right side of the road.

Plots: 13 plots available

REGISTRATION DATES

RETURNING GARDENERS: Can register after February 1st

NEW GARDENERS: Can register after March 1st



Our regularly scheduled weekly programming is paused for the winter, but we will see you back in the gardens in Spring 2026!

Our Toddler Gardens remain open to the public year round. Please continue to visit, play, and explore the gardens on your own! Families can harvest any produce that is ready to be picked.

Toddler Garden - 1001 N Latham St



Sign up for our FREE Basics Insights texting for brain boosting tips and activities to do with your kids ages 0-5!

www.basicsdekalbcounty.org

Spring Gardening Workshop



This free event provides an opportunity for participants to learn about gardening for their homes. Several speakers will offer a variety of demonstrations and general gardening tips. We will have engaging seminars, and you will have a chance to ask questions of the professionals. Be sure to register ahead of time to reserve your spot, as space is limited.

Instructor: Recreation Staff

Location: David A. Francis Center

DATE	TIME	DAY	R/NR	AGE	REG. BY
3/28	8:30am-1pm	Sa	FREE	All	3/27



VALENTINE SIP & PAINT

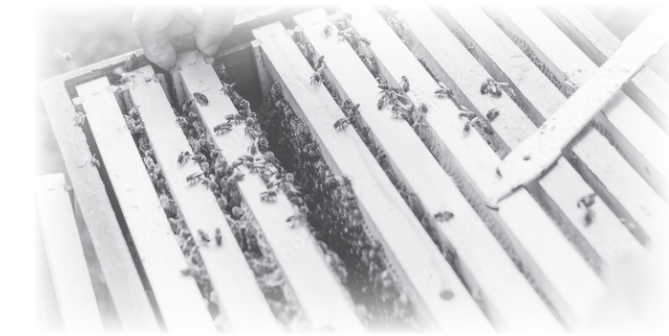
Celebrate love and creativity with our Valentine's-themed Sip & Paint night! Enjoy a relaxing evening as you create a romantic masterpiece with step-by-step guidance from our instructor. Bring your favorite beverage and special someone—or come solo—for a fun and memorable night of painting and connection.

This is a B.Y.O.B event!

Instructor: Nicole Ohme

Location: David A. Francis Center

DATE	TIME	DAY	R/NR	AGE	REG. BY
2/14	6:30pm-8:30pm	Sa	\$35/40	21+	2/6



INTRODUCTION TO BEEKEEPING

This course is an overview of basic information needed if you are interested in becoming a beekeeper. Learn the benefits of managing bee hives—from pollination to harvesting a honey crop and the equipment needed to start a hive. After attending this class, the participants will take away knowledge needed to begin the process. Bees are an important part of our environment, and this course will assist you in understanding how our honeybees operate. This course is an overview of basic information needed if you are interested in becoming a beekeeper.

Instructor: Bill Novicki

Location: David A. Francis Center

DATE	TIME	DAY	R/NR	AGE	REG. BY
3/4	6pm-7:30pm	W	\$20/30	All	2/25



ST. PATRICK'S SIP & PAINT

Celebrate St. Patrick's Day with a fun and creative evening! Join us for a festive sip-and-paint experience where you'll create your own St. Patrick's-themed masterpiece while enjoying your favorite beverage. At the end of the night, you will take your creation home with you.

This is a B.Y.O.B event!

Instructor: Nicole Ohme

Location: David A. Francis Center

DATE	TIME	DAY	R/NR	AGE	REG. BY
3/14	6:30pm-8:30 pm	Sa	\$35/40	21+	3/6



MINI GOLF OUTING

Do you love golf outings but you aren't very good at most of golf? Are you the designated putter for your normal golf outing foursomes? Now's your chance to register for this unique opportunity! Grab your friends or family and join us for the Mini Golf Outing at Idle Hour Lanes. Teams consist of 4 players, raffles and music will be available for all to enjoy. Food available for purchase on site.

Two drink vouchers per person are included with registration. The price is \$60 per foursome.

Instructor: Recreation Staff

Location: Idle Hour Lanes

DATE	TIME	DAY	R/NR	AGE	REG. BY
5/30	2:00PM	Sa	\$60	ALL	5/11



CREATE A CLASS

The Sandwich Park District is always looking for new program ideas and instructors with creative ideas or talents. If you have an idea or interest and are willing to lead activities, or if you have an idea for a new program.

email: sandwichparkdistrict@comcast.net

MOTHER GOOSE CLUB PRESCHOOL

WHAT TO EXPECT:

Your child can expect a safe, warm, and secure environment with developmentally appropriate activities, materials, and equipment. Children are encouraged to express themselves through math, science, art, and manipulative play experiences. "Together Time", with stories, songs, and finger plays adds to the fun; along with large and small muscle activities. The alphabet, numbers, colors, shapes, and name printing are introduced, along with counting and cutting skills. A nutritious snack is provided each day.



OUR PHILOSOPHY:

Young children learn best through hands-on experiences and need many opportunities to express their feelings. Emphasis is placed on social, emotional, intellectual, and physical development with our "learn through play approach". The Mother Goose Club program is designed to encourage play, which is a child's primary means of expression and problem solving.

FEES:

Monthly fees are set for the entire academic school year and are not reduced or discounted during the term for holidays or breaks. Automatic payments can be setup with a credit or debit card.

Location: Mother Goose Room

Ages: 3, 4, 5 / Child must be potty trained

Days: Monday & Wednesday

Time: 9:00A-11:00A or 12:15P-2:15P

or

Tuesday & Thursday

Time: 9:00A-11:00A

Fees: Call for current pricing.



PRE-K FRIDAYS

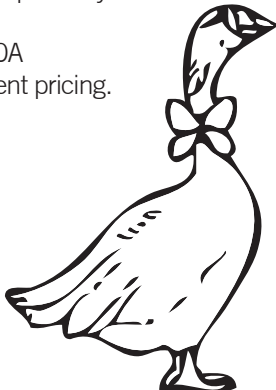
We will help build fundamental skills through fun activities, manipulatives and more. There will be many opportunities for self-expression, yet structured activities as well. Pre-K Fridays is open to all children who will be starting Kindergarten next fall. Children already enrolled in the Mother Goose Club Preschool will get first priority. Enrollment is on a "first come" basis with a maximum of 10 children.

FEES: Session fees are set for each session and are not reduced or discounted during the session for holidays or breaks. There are 3 sessions in a school year (two 10 week sessions and one 6 week session). Automatic payments can be setup with a credit or debit card.

Session I	September-December
Session II	January-March
Session III	April- May

Time: 9:00A-11:30A

Fees: Call for current pricing.





IMPROV, WRITING, & PERFORMING

This is a beginner class for any writers and performers ages 8 and up. In this class, we will be working on improvisational skills, public speaking, along with writing fun and original sketches that we will perform to a live audience on our final day of class! If you are looking for a creative outlet, this class is for you!

Instructor: Jordan Beckwith

Location: David A. Francis Center

DATE	TIME	DAY	R/NR	AGE	REG. BY
2/3-2/24	5:30pm-6:30pm	Tu	\$20/30	8+	1/27



ADULT CO-ED RECREATION SOFTBALL LEAGUE

This is a casual adult recreational softball league. Put together a roster, and register your team with the Sandwich Park District. Want to play but don't have a team? Contact Sandwich Park District and we can help find you a team.

This slowpitch softball league does keep standings with 1st place receiving bragging rights and a trophy to be played for every season! This league is intended to allow adults to stay connected with the game and provide a fun and casual softball experience.

T-shirts are included with the registration fee.

The Official ASA Co-ed playing rules will be used except where changes are noted in these rules provided to all the teams by the Sandwich Park District.


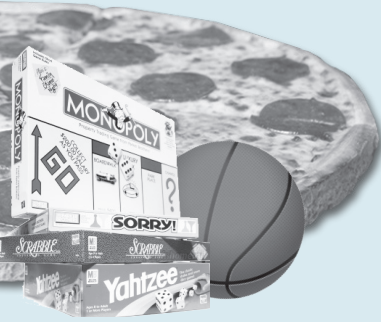
Roster Minimum: 10 people, at least 5 women per roster.

Roster Maximum: 14

Instructor: Recreation Staff

Location: Milestone Park

DATE	TIME	DAY	Team Fee	AGE	REG. BY
4/19-5/24	10am-2pm	Su	\$500	18+	3/20

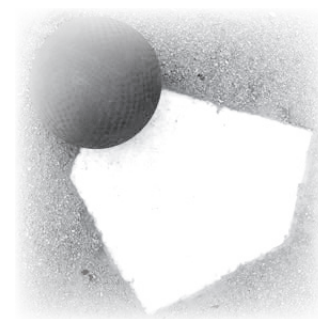



Junior High Night returns!
Come join us as we take over the Middle School for a couple of hours. Activities will include dodgeball, basketball, board games, and a root beer chugging contest. Join us for Jr. High Night — a Nerf War Battle on January 10 and Intramural Sports Night on March 21. Pizza and beverages will be provided with entrance fee

No pre-registration is necessary — just bring some friends, sign in at the door and enjoy a night of fun!

Instructor: Recreation Staff
Location: Sandwich Middle School

DATE	TIME	DAY	R/NR	AGE
1/10	6pm-8pm	Sa	\$10/10	11-14
3/21	6pm-8pm	Sa	\$10/10	11-14



ADULT CO-ED KICKBALL LEAGUE

Get ready to relive the fun on the diamond! Our Adult Co-Ed Kickball League is perfect for anyone looking to stay active in the most fun way possible, kickball! Teams will play four regular-season games, followed by a bracket-style tournament on the Saturday following the last Thursday of the season.

T-shirts are included with the registration fee.

Roster minimum: 10 people, at least 5 women per roster.

Roster maximum: 14

League rules will be set based on the WAKA (World KickBall Association) rule book.

Instructor: Recreation Staff

Location: Milestone Park

DATE	TIME	DAY	Team Fee	AGE	REG. BY
5/21-6/13	6pm-8pm	Th	\$500	16+	4/30



PEE WEE SPORTS

Come play with us! This class is perfect for getting your toddler up and moving. A variety of sport-themed activities will be introduced. Learning stations and/or group activities will include basketball, soccer, exercises, and other fun activities to keep your energetic toddler engaged. Parents are encouraged to participate with their children.

Instructor: Lawrie Knepper

Location: David A. Francis Center

DATE	TIME	DAY	R/NR	AGE	REG. BY
1/10-1/24	9am-9:45am	Sa	\$25/35	1-3	12/29

LITTLE SPARKS

Little Sparks is the Chicago Fire's introduction to soccer program where children and parents can take their first steps in soccer together! Specifically designed for children aged 2 to 4 years old and using the fun of play and imaginative stories, Little Sparks facilitates a child's physical, mental, and social-emotional development through the game of soccer!

Instructor: Chicago Fire FC

Location: Milestone Park

DATE	TIME	DAY	R/NR	AGE	REG. BY
4/10-5/1	4:30pm-5:30pm	F	\$96/106	2-5	4/3
5/15-6/5	4:30pm-5:30pm	F	\$96/106	2-5	5/8



LITTLE ONES T-BALL

This class is designed for children ages 2 to 4 who have no prior experience playing tee ball. We will introduce your child to the first stage of learning America's greatest pastime. We will have fun tossing the ball, catching, hitting and running the bases. This class will be outside at Knights Park, so dress for the weather. Please bring your own water bottle. Time for a quick snack break is included. Parents, please plan to stay and participate. If we have bad weather, we may cancel that day and you will be contacted. We will contact you regarding a rescheduled date.

Instructor: Lawrie Knepper

Location: Knights Park

DATE	TIME	DAY	R/NR	AGE	REG. BY
5/2-5/16	9am-9:45am	Sa	\$25/35	2-4	4/24

SOCCER SKILLS CLASS

Chicago Fire FC Classes are the perfect opportunity for girls and boys of all abilities to develop their soccer skills and their love for the game! Working in small groups with professional coaches from Chicago Fire FC, our classes will focus on technical development and social-emotional learning, to elevate them as both players and people.

Instructor: Chicago Fire FC

Location: Milestone Park

DATE	TIME	DAY	R/NR	AGE	REG. BY
4/10-5/1	5:30pm-6:30pm	F	\$96/106	6-10	4/3
5/15-6/5	5:30pm-6:30pm	F	\$96/106	6-10	5/8

*Clients need good pricing.
Clients need good quality.
Clients want good customer service.*

American Litho is the best way to take care of your wants and needs.

Printers of brochures and catalogs.



AMERICAN LITHO

530 North 22nd St., Milwaukee, WI 53233
(414) 342-5050 • Fax (414) 342-9950
cell (708) 308-0009

JIM McCORMICK

www.amerlitho.com

jmccormick@amerlitho.com





SPRING SOCCER

Participants will get a “kick” out of learning new soccer skills and improving on old ones. Teamwork, cooperation, sportsmanship and fun are emphasized as players gain confidence in their abilities. Divisions are determined by your child’s current age at time of registration. Games are played on Saturday mornings but may be during the week depending on the number of teams. Your child’s game time will be determined once registration closes and the number of teams are determined. Practice days and times are determined by the volunteer coach. We expect to begin practices two weeks before the first game. We are unable to switch players from one team to another. If games are canceled due to weather conditions during the season, games will be made up during the week on a practice day.

Note: shin guards are required for all games and practices.

Due to the Egg Hunt on 4/4, the first week of soccer will have a delayed start time.

Participants must wear a soccer jersey, available to purchase for \$22 online or at the office. This jersey may be worn for many seasons.

Your age on April 18th will be the age group you register under.

Instructor: Recreation Staff

Location: Milestone Park

Register early and save \$

DATE	TIME	DAY	EARLY 12/15-2/22 R/NR	2/23-3/2 R/NR	DIVISIONS	REG. BY
4/4-5/16	8am-12pm	Sa	\$60/70	\$70/80	U6: 4-5	3/2
4/4-5/16	8am-12pm	Sa	\$60/70	\$70/80	U8: 6-7	3/2
4/4-5/16	8am-12pm	Sa	\$60/70	\$70/80	U10: 8-9	3/2
4/4-5/16	8am-12pm	Sa	\$60/70	\$70/80	U12: 10-11	3/2

SPRING SOCCER COACHES NEEDED!

If you have soccer experience and would like to volunteer to coach a team, please contact Recreation department at 815-786-8044 for more information.



HEAD COACHING INCENTIVES:

Now offering head coaching incentives! For more details, contact the Recreation Manager. Volunteer head coaches are important to the success of youth sports programs. If you are interested in coaching please indicate on your child’s registration form and contact the recreation department at 815-786-8044.

50% off
FAMILY DISCOUNT PROGRAM

Sports/Leagues: The third child (or more) in your household receives a 50% off lowest resident price for “selected” sports leagues. Children must be all registered for the same activity.



Looking for Referees & Umpires

Contact Sandwich Park District for more information on how to get involved!



pay varies depending on the sport



T-BALL LEAGUE

The Park District's T-ball program is designed to teach basic fundamentals, sportsmanship, and the importance of having fun. Players will hit the ball off a batting tee and learn the basics of baseball and softball. Once registration has closed and the coaches' meeting has taken place, practice and game schedules will be distributed by individual coaches. We expect to begin practices two weeks before the first game. Practices will be held on Tuesdays and Thursdays. Once the season starts, games will be played on Tuesdays and Thursdays.

EQUIPMENT NOTE: Each player must have their own glove and should wear gym shoes. Cleats are not required, but if you choose to purchase them, they must be rubber cleats (not metal). Bats are provided by the Sandwich Park District. Batting helmets are required; if your child does not have one, a helmet will be provided for their safety.

Instructor: Recreation Staff
Location: Milestone Park

DATE	TIME	DAY	R/NR	AGE	REG. BY
6/2-6/18	5pm-7pm	Tu/Th	\$30/35	3-5	5/1

**Register
Online**

HEAD COACHING INCENTIVES:

Now offering head coaching incentives! For more details, contact the Recreation Manager. Volunteer head coaches are important to the success of youth sports programs. If you are interested in coaching please indicate on your child's registration form and contact the recreation department at 815-786-8044.

ADULT CO-ED RECREATION SOFTBALL LEAGUE

MORE INFO ON PAGE 13

ADULT CO-ED KICKBALL LEAGUE

MORE INFO ON PAGE 13

SPRING SOFTBALL

The Sandwich is participating in the Yorkville Parks and Recreation Spring Softball League. Yorkville Parks and Recreation Department along with neighboring communities Somonauk, Leland, Plano, Earlville, Hinckley, Newark/Lisbon, Serena, Paw Paw, and Sandwich have partnered to offer this expansive softball experience. Please note that travel to these neighboring communities for away games is required as a part of this league.

1st - 2nd Grade: This division is designed primarily as the beginning point for learning girls' softball. It is a developmental step designed to teach softball fundamentals in a fun atmosphere. At this level, there are no wins and no losses. Basic hitting and defensive skills are the focus of this age.

3rd - 4th Grade: This division is designed primarily as the beginning point for learning girls' softball. It is a developmental step designed to teach softball fundamentals in a fun atmosphere. This level adds a competitive element as wins, losses, and a postseason tournament becomes part of the experience.

5th - 6th Grade: This division is designed primarily as the point for learning girls' softball increases. The game increases in size, speed, and competition level. Skills are taught at a higher level. Field dimensions increased as well. At this level, there is a competitive element as wins, losses, and a postseason tournament becomes part of the experience.

7th - 8th Grade: This division is designed primarily as the point for learning girls' softball increases. It incorporates the same rules as high school and the level of competition increases further as girls develop their athletic skills in preparation for High School. At this level, there is a competitive element as wins, losses, and a postseason tournament becomes part of the experience.

Registration is based on the grade the player is in at the time of registration. League rules state that participants must live within the boundaries of Sandwich School District in order to be eligible to play for the Sandwich Park District team. Each parent is required to submit a concessions form along with a \$150 check (or credit/debit card) prior to receiving their jersey. Each parent must complete a shift at the concessions stand during the season in order for the check to be waived.

Fees: The fee you pay is determined by your tax bill supporting the district.

A jersey is included with the registration fee. Here is a list of other equipment we recommend:

- Black Baseball Pants
- Orange Socks
- Batting Helmet
- Rubber Cleats
- Glove
- Fielder's Mask
- Bat

Call (815)786-8044 for more information on registration.

Instructor: Recreation Staff
Location: Various Locations

DIVISION	DATES	R/NR	REG. BY
1ST & 2ND	5/2-6/27	\$85/115	2/16
3RD & 4TH	5/2-6/27	\$105/135	2/16
5TH & 6TH	5/2-6/27	\$135/165	2/16
7TH & 8TH	5/2-6/27	\$135/165	2/16



SOFTBALL FUNDAMENTALS

For girls playing in the upcoming softball season, here is the chance to sharpen your fundamental softball skills and get a leg up on the competition. Participants will have the chance to work on some of the core areas of softball fundamentals including fielding, throwing, catching, and baserunning. Participants should bring their own gloves and wear comfortable athletic attire and gym shoes. Don't wait until summer, come out and sharpen your skills now!

Instructor: Lawrie Knepper

Location: Lynn G Haskin Elementary School

DATE	TIME	DAY	R/NR	AGE	REG. BY
2/14-3/7	9am-10pm	Sa	\$40/50	6-8	2/6

SOFTBALL PITCHING CLINIC

Here is an opportunity for girls ages 8 to 14 years old to improve their pitching skills. This pitching camp will teach both beginners and experienced players the proper fundamentals of pitching. The skills being taught will include the proper way to grip the ball, stance on the mound, pitching delivery, when to release the pitch, and how to consistently find the strike zone. For more experienced pitchers, the instructor will enhance their current abilities, teach new pitches, and take their abilities to the next level. Participants should wear gym shoes and bring their own gloves. Don't wait until the spring to improve your game, get ahead of the competition now.

Instructor: Laura Condon

Location: Sandwich Middle School

DATE	TIME	DAY	R/NR	AGE	REG. BY
2/15-3/8	1pm-2pm	Su	\$35/45	8-14	2/6



VOLLEYBALL CAMP

Digtown Volleyball is committed to player development both on and off the court. We strive to instill confidence in the athlete by challenging and empowering them to believe in their abilities while stepping out of their comfort zone. These volleyball camps are designed to allow players to work on all the fundamental skills over the course of a few days.

Instructor: Digtown Volleyball

Location: Dummer Gym

DATE	TIME	DAY	R/NR	AGE	REG. BY
3/23-3/26	8am-10am	M-Th	\$100/110	8-10	3/13
3/23-3/26	10am-12pm	M-Th	\$100/110	11-14	3/13



PLEASE JOIN US IN 2026 AND 2027 ON THESE GREAT TRIPS

ALL GUIDED & INCLUDE PICKUP/DROP OFF AT YOUR HOME!



JEWELS OF THE RHINE & GOLDEN PASS RAIL

June 7, 2026 | 13 Days

FREE AIRFARE – book by 12/31/25
from \$6,375 per person



NEW ENGLAND RAILS AND SAILS

September 30, 2026 | 9 Days

FREE AIRFARE – book by 12/31/25
from \$4,249 per person



ICELAND - LAND OF FIRE & ICE

September 12, 2026 | 7 Days

FREE AIRFARE from Chicago – book by 12/31/25
from \$3,919 per person



SENSATIONS OF LYON & PROVENCE RIVER CRUISE

October 9, 2026 | 12 Days

FREE AIRFARE – book by 12/31/25
from \$5,465 per person



COSTA RICA

January 29, 2027 | 8 Days

\$100 SAVINGS – book by 12/31/25
from \$4,599 per person

Travel Services of Yorkville
call Cara at 630-553-7200
info@travelservicesofyorkville.com
www.travelservicesofyorkville.com

801 N Bridge St. (RT 47), Yorkville, IL
Office is open & in person.
Call, email or stop on by.

CARDIO & DANCE

A one-hour dance party where we incorporate dance moves to different types of music to get your heart pumping! Sessions may incorporate muscle building moves to the music, such as squats, leg lifts and lunges. Have fun and don't be afraid to strut your stuff!

Instructor Bio:

Jen Ketchum lives in Sandwich and has been doing cardio dance classes since 2010 which started at the Sandwich Park District! She is excited to expand her experience and start teaching classes this time! She also has experience with dance when doing theatre productions in her spare time. Everyone can move at their own pace and just having fun is the goal while getting our bodies in shape again. Cardio dance is not just Latin style music but also country, disco, hip hop and pop.

Instructor: Jen Ketchum

Location: David A. Francis Center

Session	DATES	TIME	DAY	R/NR	AGE	REG. BY
January - Mondays	1/5-1/26 (4 weeks)	6:30pm-7:30pm	M	\$28/33	14+	12/29
January - Thursday	1/8-1/29 (4 weeks)	6:30pm-7:30pm	Th	\$28/33	14+	12/29
February - Mondays	2/2-2/23 (4 weeks)	6:30pm-7:30pm	M	\$28/33	14+	1/26
February - Thursday	2/5-2/26 (4 weeks)	6:30pm-7:30pm	Th	\$28/33	14+	1/29
March - Mondays	3/2-3/30 (5 weeks)	6:30pm-7:30pm	M	\$35/40	14+	2/23
March - Thursday	3/5-3/26 (4 weeks)	6:30pm-7:30pm	Th	\$28/33	14+	2/26
April - Mondays	4/6-4/27 (4 weeks)	6:30pm-7:30pm	M	\$28/33	14+	3/30
April - Thursdays	4/2-4/23 (4 weeks)	6:30pm-7:30pm	Th	\$28/33	14+	3/26



Classes start January 7

Twirl Star Dance Ages 3 - 4 Wednesday 5:00 - 5:30 PM

A basic introduction to dance, focusing on ballet. Your little ones will love to plie, passe and echappe' with props and themes. We inspire movement and creativity within a positive environment.

Mini Ballet & Jazz Ages 5 - 6 Wednesday 5:45 - 6:30PM

This class is for those high energy little ones that are always ready to show off their dance moves! It combines the basics of hip hop (only age appropriate movement and music - we promise!) with basic ballet steps.

Jr. Jazz Pom Dance Ages 6 - 8 Wednesday 6:30 - 7:15 PM

Pom dancing focuses on precise, synchronized motions along with jazz dance skills, such as jumps, turns, and leaps. We supply the poms to use in class.



Register Here

Classes run monthly January - May.
Classes will have the opportunity to participate in our holiday and spring performances.

***Register for Sandwich Park District Classes at
www.starstwirlandtumble.com***

TROEGER DOG PARK



MUTT STRUT

Get ready for a tail-wagging good time! Bring your furry friends to Troeger Dog Park for a fun-filled day of talents, fashion, food, and socializing at this FREE Community Event!

Watch adorable pups strut their stuff on the runway and show off their best tricks in our Talent & Fashion Show. Whether your dog can roll over, pose like a pro, or simply steal the spotlight, this is their time to shine!

Not registered for the dog park yet? No problem! Our friendly staff will be on-site to help sign up for Troeger Dog Park—just bring a copy of your dog's vaccination records, and we'll get you all set for the year.

Schedule for Event:

10am-11am: Registration (for those who aren't registered to Troeger Dog Park).

11am-12pm: Talent & Fashion Show

12pm-1pm: Social Hour

Instructor: Recreation Staff

Location: Troeger Dog Park

DATE	TIME	DAY	R/NR	AGE	REG. BY
4/18	10am-1pm	Sa	FREE	ALL	N/A



Location: Corner of South Wind Dr. & Fairwinds Blvd.

Hours: Open Sunrise to Sunset

Membership Tags

Once a Year Membership (Jan-Dec) RES \$20 | NR \$30 per dog. Tags may be renewed starting October 1st of current year for the coming year.

How to purchase your tag: Register online or at the Sandwich Park District at the David A. Francis Center located at 1001 N. Latham St. Sandwich, IL

The following is required at the time of registration.

1. Proof of residency
2. A document from your veterinary office showing proof of up-to-date vaccines for Rabies. A Rabies tag number will not be accepted as proof of vaccination.

Amenities

- Small dog section
- Large dog section
- Off-street parking
- Drinking fountain with pet fountain
- Two benches
- Table
- Dog waste disposal
- ADA Accessible

When visiting the Park

Follow all posted Dog Permit Rules including:

- No children under the age of 10
- Keep your dog on leash until it is safely in the park and is acclimated to the other dogs
- Membership tags must be displayed on the dog's collar or with the member.



Resident
Permit
QR code



Non-Resident
Permit
QR code



PROFESSIONAL DEVELOPMENT: HOW TO STAND OUT WHEN APPLYING FOR THE JOB YOU WANT!

What are employers looking for when they evaluate potential employees? How should you structure your resume to impress potential employers and avoid disqualification? This seminar is designed so you can workshop your resume and make yourself more hireable. Be sure to ask plenty of questions. **No Registration Required.**

Instructor: Bill Novicki

Location: David A. Francis Center

DATE	TIME	DAY	R/NR	AGE
1/6	6pm-7pm	Tu	FREE	All



tend!

BABY BASICS WITH DR. BLAIR

This free-to-the-community class will be a laid-back, conversational discussion about what to expect with your baby in the first weeks of life. We will cover what you actually need at home before the baby comes, what products are safe and unsafe, and tips for navigating common challenges when the baby arrives. Discussion will be targeted toward caregivers expecting a new baby, but anyone hoping to learn more about the newborn days is welcome to attend! **No Registration required.**

Dr. Blair Wright is a pediatrician who grew up here in Sandwich—even attending the Park District's Mother Goose a couple of decades ago! She completed college at Illinois Wesleyan University then medical school at the University of Illinois through the nationally recognized "RMED" rural medicine program. Blair completed residency as a physician at Stead Family Children's Hospital in Iowa City from 2019-2022 and has been back home for just over a year with a primary care pediatric practice right here in Sandwich. She looks forward to giving back to the community that raised her and to building connections that help make our community the best place to raise healthy and happy kids.

Instructor: Dr. Blair Wright

Location: David A. Francis Center

DATE	TIME	DAY	R/NR	AGE
1/13	6pm-7pm	Tu	FREE	All



TAX FACTS: THE SECRETS OF TAXES

Brian Murphy is a tax professional who owns Murphy & Associates LTD. Join us for a discussion on the in's and out's of the tax process. Be sure to bring plenty of questions for the tax expert and walk

out confident in yourself for the upcoming tax season.

No Registration Required.

Instructor: Brian Murphy, CPA

Location: David A. Francis Center

DATE	TIME	DAY	R/NR	AGE
1/20	6pm-7pm	Tu	FREE	All



FIRE & HOME SECURITY

Join us for an informative and engaging free seminar focused on keeping your home and family safe. Led by our local Fire Chief and Police Chief, this event will cover essential tips and strategies for fire prevention, emergency preparedness, and crime prevention in and around your home.

What You'll Learn:

- Fire safety basics and how to create an evacuation plan
- Proper use of smoke detectors, fire extinguishers, and other safety tools
- How to secure your home against break-ins and theft
- Common Security Measures used for home safety
- Q&A with the Fire Chief and Police Chief

Join us for a great opportunity to ask questions, get expert advice, and take practical steps to improve your home's safety. This seminar is aimed at homeowners, renters, families, and anyone interested in protecting their home and loved ones. **No Registration Required.**

Instructor: Local First Responders

Location: David A. Francis Center

DATE	TIME	DAY	R/NR	AGE
1/27	6pm-7pm	Tu	FREE	All



Scott Hanson Photography

Phone: 815-498-2516
email: shphoto@comcast.net
www.scotthansonphotography.com

Portraits on location
Families, Seniors
Special Events &
Sports Photography



Sandwich Park Foundation

Our Mission

The Sandwich Park Foundation is a separate non-profit organization whose purpose is to support the Sandwich Park District and its endeavor to provide quality recreational programs.

Sandwich Park Foundation Projects



The Sandwich Park Foundation worked in conjunction with the Sandwich Park District to open the New Troeger Dog Park.



The Foundation hosts an annual Pollinator Plant Sale in June every year. Proceeds from this sale help fund the foundations IVVC Scholarship.



The Sandwich Park Foundation maintains a tree memorial program. Each memorial tree donation includes a leaf engraving in memory of your chosen loved one.

How You Can Help

- Make a donation
- Plant a memorial tree
- Become a committee member
- Volunteer for an event
- Help support the foundation

What The Park Foundation Does

The Sandwich Park Foundation helps assist the Sandwich Park District by raising funds to support capital projects, scholarship opportunities, and provides program support. The Sandwich Park Foundation also has a memorial program. Within this program you can plant a tree for a loved one or purchase other park items to commemorate a loved one or friend. Contact us today to find out more!

ICE RINK

Location on the basketball courts at Knights Park. Watch for the green Flag. Ice Rink hours and rules and Ice condition updates can be found at sandwichparkdistrict.org on the Ice Rink Page.

Green Flag = OPEN  Red Flag = CLOSED

HOCKEY HOURS

TENTATIVE



Weekdays: 8:00am - 10:00am
8:00pm - 9:00pm

Weekends: 8:00am - 10:00am
8:00pm - 9:00pm

If no one is on the ice during "hockey time", open skaters may use it.

If hockey players come to play, open skaters MUST STOP.

If no one is on the ice during "open skating" time, hockey players may use it. If someone comes to skate, hockey MUST STOP.

LIGHTS TURN OFF AT 9:00PM

Please respect others.



Kishwaukee
Special Recreation
Association

1403 Sycamore Road, DeKalb, IL 60115

kishsra.org | 779-777-7785



There is a purpose to our play!

Kishwaukee Special Recreation Association offers year-round programs for all ages and abilities!

See details and a complete list of programs at kishsra.org.

Member Districts:

DeKalb Park District
Flagg-Rochelle Park District
Genoa Township Park District
Sandwich Park District
Sycamore Park District

Play, Laugh, Learn, and Grow with KSRA!



FOX VALLEY COMMUNITY CENTER & SANDWICH ADULT DAY SERVICE:

1406 Suydam Rd, Sandwich, IL | 815-786-9404

KAPPER ADULT DAY SERVICE:

1701 E. Lincoln Highway, DeKalb, IL | 779-255-1208



WWW.FVOAS.ORG



- ADULT DAY SERVICE: 2 LOCATIONS
- IN HOME SERVICE: 4 COUNTIES
- SENIOR & COMMUNITY CENTER
- TRAVEL, GAMES & ACTIVITIES
- MEAL CENTER & FOOD PANTRY
- SUPPORT & RESOURCES
- PARTIES & ENTERTAINMENT
- MOVEMENT & WELLNESS
- BANQUET HALL RENTAL

ACTIVE ADULT ACTIVITIES & GOOD TIME TRAVEL

Our Active Adult Programs offer a wide variety of engaging activities, social & support groups + exciting trips that promote socialization, wellness & fun! Visit our center, socials or website for the full activity & trip calendars.

ADULT DAY SERVICE / HOME SERVICES | SERVING DEKALB, KANE, KENDALL, & LASALLE COUNTIES

Home Services provides older adults assistance with self care and daily tasks, allowing them to live independently in their own homes, longer. Our Adult Day Service provides exceptional care for adults unable to remain alone due to any physical or cognitive challenge such as dementia, Parkinson's, or Alzheimers. We offer daily guided movement sessions, nutritious meals, medication dispensing & health monitoring + stimulating activities that spark joy.

ENRICHING THE JOURNEY OF LIFE

KAIFECT

FAA Licensed Aerial Videography and Photography



- Promote your Sports and Events with Video and Live Broadcast
- Real Estate Videos and Photos
- Agricultural Surveying
- Structural and Construction Inspections
- Professional Video Editing



Learn More at
Kaifect.com/Aerial

Park District License plate



This plate generates revenue for the Power Play! Grant Program, which funds beyond-school programming for youth in Illinois park districts and recreation agencies. Twenty-five dollars from the sale and subsequent renewals of each plate is placed into the Power Play! Grant fund. Illinois park districts and recreation agencies can apply for these funds to begin or enhance beyond-school programs that emphasize fitness, nutrition and health. For more information on obtaining these license plates, contact your local DMV or visit Cyberdriveillinois.com.

PUTTING YOU FIRST.

Now and for the long term.

1 fnbo

The great big small bank

100 W. Church St.
Sandwich, IL 60548
815.570.2820

Member FDIC



SANDWICH PARK DISTRICT

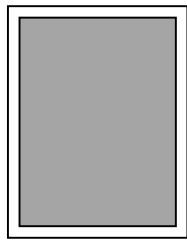
1001 N. Latham Street • Sandwich, Illinois 60548 • 815-786-8044

Program Guide Advertising

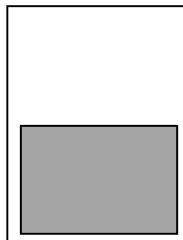
The Sandwich Park District program guide is printed three times a year and is delivered to over 6800 households in and around Sandwich, with an additional 300 handed out at events and available for pick up at area partner locations. That's a total of 21,300 printed each year!

Take advantage of this opportunity for your company/business's message to be included in a publication that reaches the Sandwich and surrounding area residents three times per year.

Pick your Size



Full Page Ad



1/2 Page Ad



1/4 Page Ad



Location	Size	Single AD	3 Issue Rate (BEST VALUE)
Premium Position (Back Cover, In Color)	Full Page	\$1,000	\$2700 (\$300 Savings)
Premium Position (Back Cover, In Color)	Half Page	\$500	\$1350 (\$150 Savings)
Full Page (Interior) (Black and White)	Full Page	\$600	\$1500 (\$300 Savings)
Half Page (Interior) (Black and White)	Half Page	\$300	\$750 (\$150 Savings)
1/4 Page (Interior) (Black and White)	1/4 Page	\$150	\$375 (\$75 Savings)

Email your interest to sandwichparkdistrict@comcast.net for more information on reserving your ad space in a future issue.

Issue

- Summer
- Fall / Winter
- Winter / Spring

Delivered / Months Covered

April = (May, June, July, Aug.)
 August = (Sept., Oct., Nov. Dec.)
 December = (Jan., Feb., Mar., Apr.)



ELLA'S ITALIAN PUB

A cozy neighborhood spot with a modern twist on classic Italian comfort food. Ella's Italian Pub offers a warm, welcoming atmosphere perfect for casual lunches out with friends. The menu features wood-fired pizzas, fresh pasta dishes, and hearty entrees made with locally sourced ingredients. Be sure to check the nearby stores after our meal and take home something nice!

Instructor: Recreation Staff

Location: David A. Francis Center/Geneva IL

DATE	TIME	DAY	R/NR	AGE	REG. BY
1/8	11am-4pm	Th	\$15/17	18+	1/2

GIA MIA

Gia Mia is a warm and inviting Italian-inspired eatery known for its modern twist on classic favorites. The menu highlights wood-fired Neapolitan pizzas, handmade pastas, and fresh small plates perfect for sharing. Gia Mia is just as fitting for casual lunch as it is for a lively lunch with friends. Afterwards, we will shop around Naperville.

Instructor: Recreation Staff

Location: David A. Francis Center/ Naperville IL

DATE	TIME	DAY	R/NR	AGE	REG. BY
2/12	11am-4pm	Th	\$15/17	18+	2/5

PEPES RESTAURANT

A local favorite for Mexican-American classics, serving sizzling fajitas, famous enchiladas, and fresh chips with salsa in a cozy, family-friendly setting. Every meal begins with fresh chops and house-made salsa, setting the tone for a delicious dining experience. Make sure to come out and enjoy lunch with shopping around Batavia!

Instructor: Recreation Staff

Location: David A. Francis/ Batavia IL

DATE	TIME	DAY	R/NR	AGE	REG. BY
3/12	11am-4pm	Th	\$15/17	18+	3/5



Fee covers the cost of transportation,
the cost of your meal is not included.
If time allows, light shopping will follow lunch.

HAZE SMOKEHOUSE

Come with us on a trip to La Salle-Peru for a nice lunch at Haze Smokehouse. Known for its mouthwatering barbecue, this spot serves up tender smoked meats, hearty sides and creative twists on classic comfort food. The laid-back yet energetic vibe makes it perfect for casual dining with friends. After the meal, we will do some shopping in the downtown area.

Instructor: Recreation Staff

Location: David A. Francis/ La Salle IL

DATE	TIME	DAY	R/NR	AGE	REG. BY
4/9	11am-3pm	Th	\$15/17	18+	4/2



Let us do
the driving...





ROCKFORD ICEHOGS VS. TEXAS STARS

Join us for a night of Hockey as we travel to Rockford to watch the Icehogs take on the Stars of Texas! Let our Recreation staff take care of the transportation to and from the game while you enjoy the action with \$2 Beer and Soft Drinks. The Rockford Icehogs games are a great experience for all ages to make lifelong memories, so come make some of your own with us!

Instructor: Recreation Staff

Location: David A. Francis Center/BMO Center Rockford, IL

DATE	TIME	DAY	R/NR	AGE	REG. BY
1/23	5pm-10pm	F	\$45/45	All	1/2



FIELD MUSEUM

Discover all the Field Museum has to offer with this fun filled trip. Let us do the driving to downtown Chicago while you enjoy exploring the famous Field Museum. The Field Museum fuels a journey of discovery across time to enable solutions for a brighter future rich in nature and culture. With many exhibits ranging from Ancient Egypt, Birds, Nature, The Evolving Planet, China, Restoring Earth, Dinosaurs including the world-famous SUE, and much more. Registration covers transportation and general admission. Lunch, extra exhibits, and movies are at your expense. While on this trip you can explore the museum at your own pace or join our provided instructor to guide you around the museum.

Instructor: Bill Novicki

Location: David A. Francis Center/ Field Museum

DATE	TIME	DAY	R/NR	AGE	REG. BY
2/21	8am-5pm	Sa	\$60/60	All	2/6



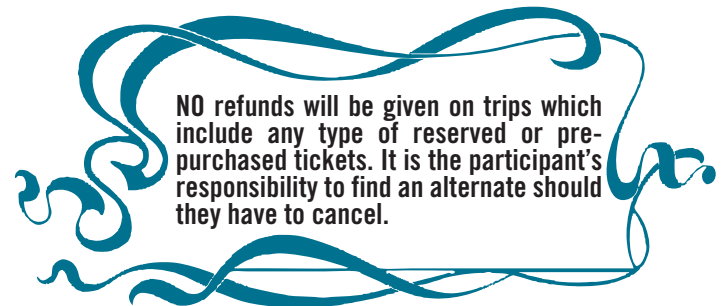
HARD ROCK CASINO

Looking to do some gambling? We're taking a trip to Rockford this winter to visit Hard Rock Casino. There, you will be able to play the slots, as well as the many table games they offer (including Blackjack, Roulette, and craps). The casino contains restaurants for lunch, as well as a bar. Please note, the price of registration only covers travel. **You must be 21 or older to register.**

Instructor: Recreation Staff

Location: David A. Francis Center/ Rockford, IL

DATE	TIME	DAY	R/NR	AGE	REG. BY
4/14	9am-5pm	Tu	\$30/30	21+	4/7



*Let us do
the driving...*



CIVIL WAR ENCAMPMENT

Visit an actual Civil War Encampment right at Knights Park. See the soldier's tents, weapons, how their meals were cooked, and what items were carried in Knapsack as the 10th Illinois Regiment brings history to life. Each volunteer from the 10th Illinois Regiment portrays a soldier from this area that enlisted during the Civil War time period. This event is open to the public. No registration required for the public to attend.

School groups by reservations only on Friday. Please contact the Sandwich Park District at 815-786-8044 to reserve a time slot.

Stop in for a visit, they camp out all weekend.

Instructor: Recreation Staff

Location: Knights Park

DATE	TIME	DAY	R/NR	AGE
4/10-4/12	All Day	F-Su	FREE	All



FREE
Ages: 1-12
Saturday, April 4
9:30a-10:30a

This annual event will take place outside at Knights Park, rain or shine! Dress appropriately and bring a basket to collect your eggs. There will be three age divisions. 3 and under, 4-7, 8 and up. Make sure all children have an adult while searching for eggs. There will be a limit of 8 eggs per child. Afterwards, you may stay and visit with the Bunny!

WEATHER NOTE: This is a rain or shine event. In the event of lighting, the event will be cancelled and possibly re-scheduled. Watch our Facebook for details regarding weather cancellations.



SPRING EGG HUNT

Location: Knights Park
Instructor: Recreation Staff
No registration required.



Sandwich Park District
1001 N. Latham St.
Sandwich, IL 60548

PRSRST STD
U.S.POSTAGE
PAID
MILWAUKEE, WI
PERMIT NO. 530



Roofing • Siding Gutters • Windows

Celebrating 18 years in
business!



**Chamber
Member**



Call Us Today:
815-786-3100
Visit Our Showroom:
3775 Drew Ave,
Sandwich, IL 60548



Sandwich Park District